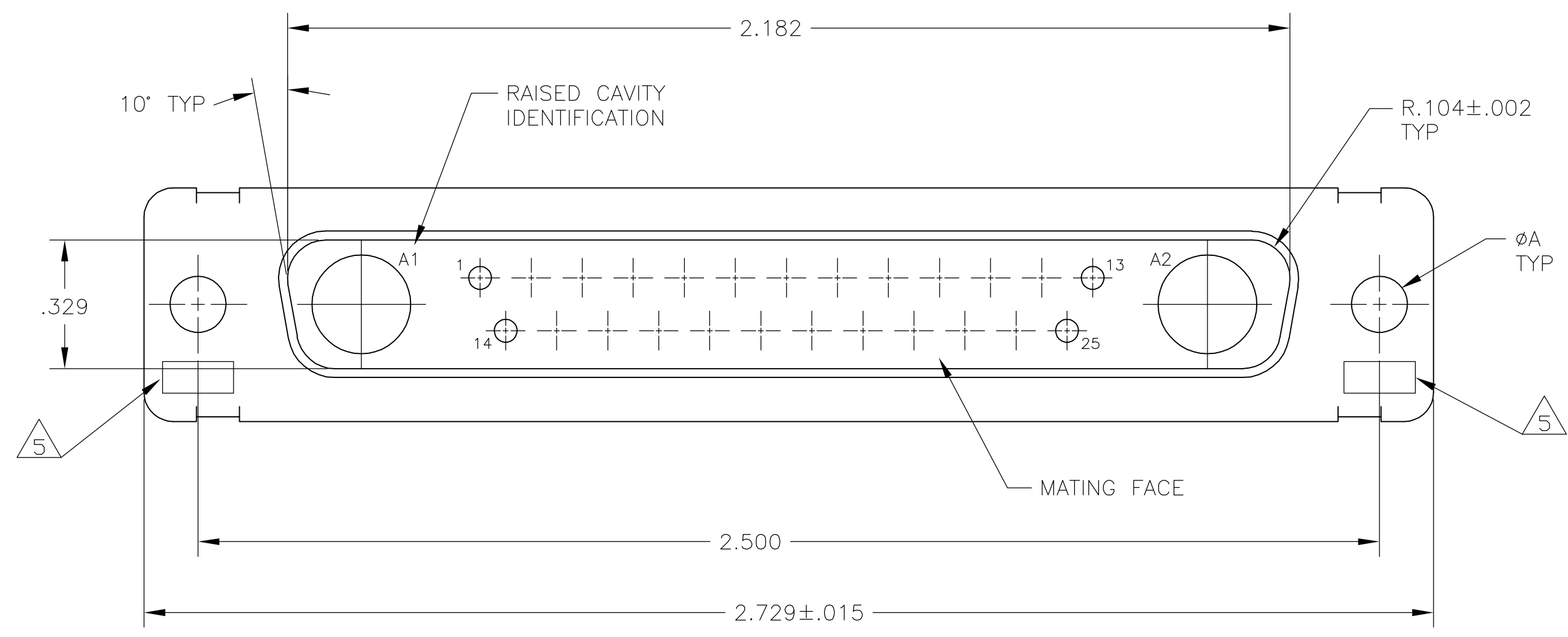
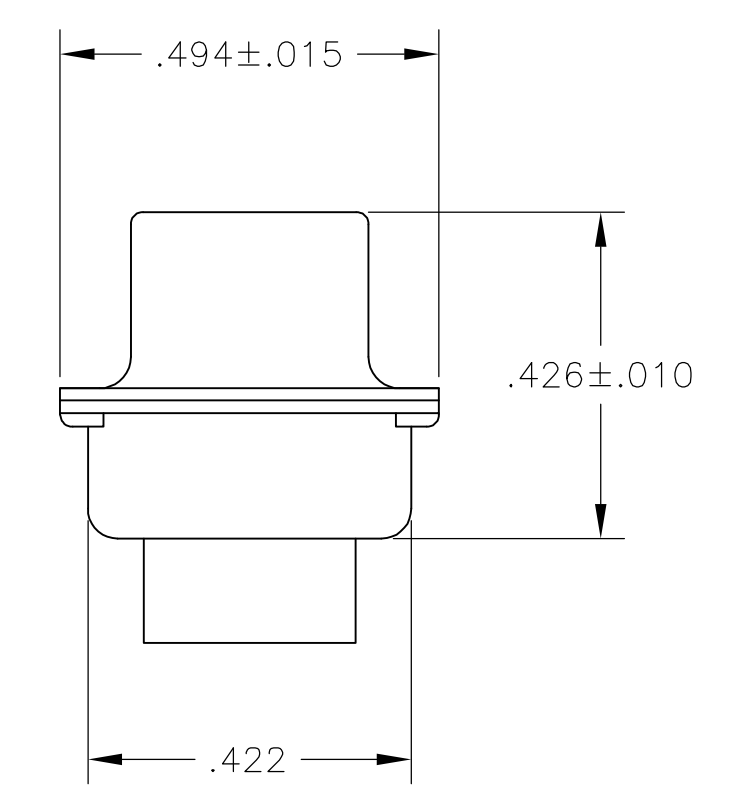
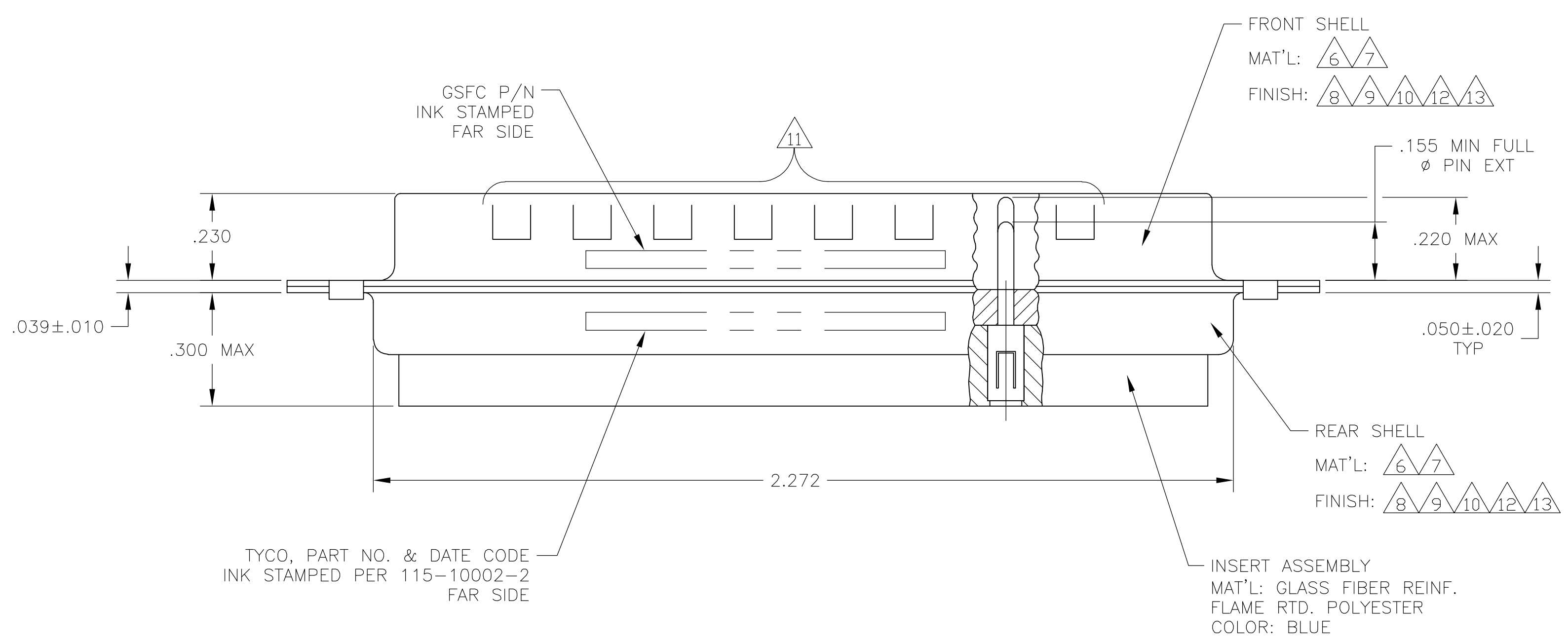


LOC	DIST	REVISIONS			
P	LTR	DESCRIPTION	DATE	DRN	APVD
G		REV PER ECO 05-014840	20JAN06	BL	CT

- THIS PLUG WILL MATE WITH ANY 27C2, SIZE 4 RECEPTACLE IN AMPLIMITE SERIES.
- MAXIMUM WIRE INSULATION TO BE USED WITH THIS PLUG IS ϕ .068.
- THIS CONNECTOR ACCEPTS (2) POWER 8, OR COAX PIN CONTACTS IN POSITIONS A1 THRU A2, PURCHASED SEPARATELY.
- THIS CONNECTOR ACCEPTS SIZE 20 PIN SIGNAL CONTACTS IN POSITIONS 1 THRU 25, PURCHASED SEPARATELY.



- 5 UL/CSA DESIGNATION STAMPED IN THIS AREA, OPTIONAL.
- 6 STEEL PER ASTM-A-109.
- 7 BRASS PER MIL-C-50 AND ASTM-B-36 UNS NO. C26000.
- 8 CADMIUM PLATED PER QQ-P-416.
- 9 FINISH: GOLD PLATED PER MIL-G-45204 TYPE II, GRADE C, CLASS 1 OVER COPPER PER MIL-C-14550, CLASS IV.
- 10 FINISH: TIN PER ASTM-B-545, .000200 MIN THK OVER COPPER PER AMS2418, .000100-.000200 THK OR TIN-LEAD 93/7, .000200 MIN THK OVER COPPER PER AMS2418 .000100-.000200 THK.
- 11 GROUNDING INDENTS FOR 212538-4 & 5-212538-4 ONLY.
- 12 FINISH: TIN PER ASTM-B-545, .000200 MIN THK OVER COPPER PER AMS2418 .000100-.000200 THK.
- 13 FINISH: ZINC PLATE PER ASTM-B-633 .000200-.000400 THK WITH SUPPLEMENTARY CHROMATE (Cr3+).



6 11 12	.120	-	5-212538-4
6 13	.120	-	5-212538-1
6 10 11	.120	-	212538-4
7 9	.154	311P405-21P-B-15	212538-3
7 9	.120	311P405-21P-B-12	212538-2
6 8	.120	-	212538-1
REMARKS	ØA	GSFC P/N	PART NO.

THIS DRAWING IS A CONTROLLED DOCUMENT.

DW	C.C. THOMAS	21-JAN-88		Tyco Electronics Corporation
CHK	A. EMADI	27-JAN-88		Harrisburg, PA 17105-3608
APP'D	A. EMADI	27-JAN-88	NAME	PLUG ASSEMBLY
PRODUCT SPEC			AMPLIMITE 27C2	
APPLICATION SPEC			SIZE 4, SERIES 109, COAX MIX	
SIZE	A1	00779	C=212538	RESTRICTED TO
WEIGHT				
CUSTOMER DRAWING		SCALE 4:1	SHEET 1 OF 1	REV G